

Operational Highlights

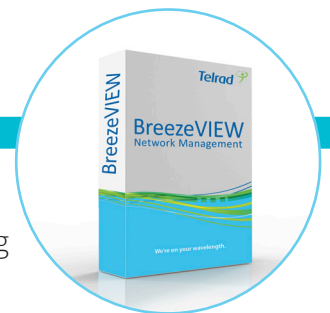
- Full management and visibility
- Action driven - "2-Click" operational flows
- Customized dashboards
- Powerful fail-safe configuration deployment with rollback option
- Pre-provisioning configuration for new devices
- Network-wide CLI for multiple device transactions
- Vital performance and traffic data in graphical & tabular views
- Simple to use, install, and deploy web-based management platform

Feature Highlights

- Trending reports and graphs
- Geographic presentation of devices
- Topology representation of devices
- Northbound interface towards OSS/BSS systems
- Security, user authorization & authentication
- Enhanced fault management
- Long-term performance and traffic monitoring
- Network intelligent analysis



BreezeVIEW



The BreezeVIEW Management System is a comprehensive apparatus for building, managing and supporting the entire LTE device life-cycle - from initial installation to full service provisioning and ongoing maintenance and support activities.

BreezeVIEW is scalable for any network size, and can be deployed gradually in accordance with network needs.

The BreezeVIEW solution enables provisioning, monitoring and maintaining of the BreezeCOMPACT Family, BreezeWAY EPC & Telrad CPE portfolio.

Comprehensive network management system - it's never been simpler

Designed for simplicity

BreezeVIEW provides an enhanced and innovative collection of automated and customized facilities, such as: customized super dashboards, trending reports and graphs, detailed client data for planning and troubleshooting, comprehensive events management, and smooth integration with OSS layers.



- Provides full management and visibility of the entire LTE network.



- Carrier-class performance & traffic monitoring system that ensures Quality of Service (QoS) and optimizes LTE-network performance.



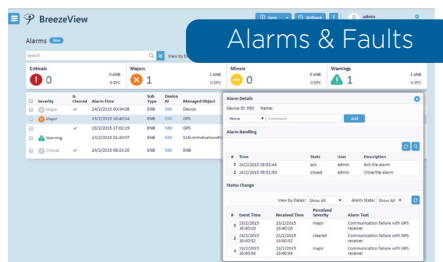
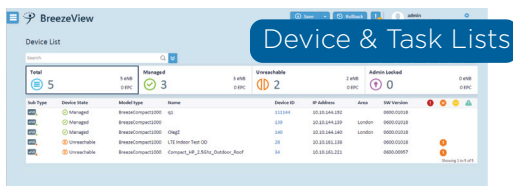
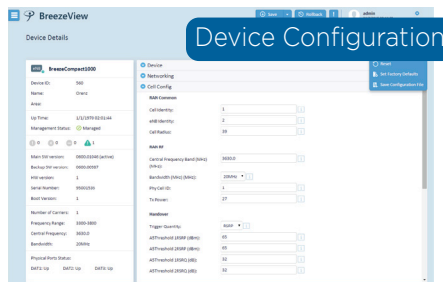
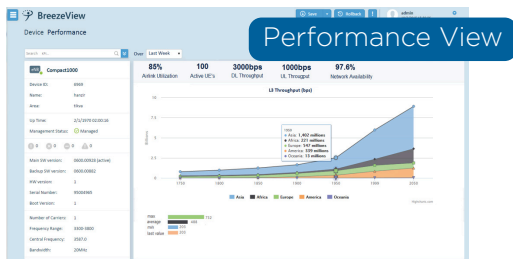
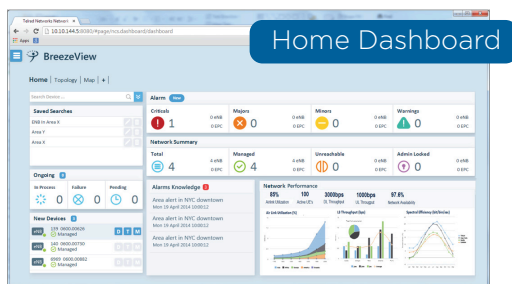
- Remote CPE management, monitoring and diagnosis for data, voice & video services on TR-069 CPEs

Network Performance Visibility

BreezeVIEW provides carrier-class performance and traffic monitoring that ensures Quality of Service (QoS) and optimizes LTE network performance.

- Maximize traffic capacity
- Ensure Quality-of-Service & service levels
- Proactively identify problems & bottlenecks
- Increase subscriber loyalty & satisfaction
- Detect performance degradation

streamline the advanced monitoring, reporting and troubleshooting tasks required for efficient operation



Single-point, complete, end-to-end, LTE device lifecycle management

BreezeVIEW is a complete, fully-featured management platform that lets operators securely configure, monitor and maintain LTE network devices. Simple to install, and easy to use, BreezeVIEW provides a comprehensive solution for configuration, fault detection, audit, and performance management. BreezeVIEW offers the scalability expected for any network scale.

4G Network Remote Management:

- Installation
- Provisioning and activation
- Monitoring, diagnostics and troubleshooting
- Maintenance
- Northbound interfaces to OSS/BSS

Action driven "2-Click" operational flows

- Fast and Intuitive provisioning & maintenance using enhanced automate tools
- Pre-provisioning for configuration of new devices

4G network devices can be grouped by any defined criteria, and powerful tools used to easily provision the devices, such as using other devices, templates, configuration files and pre-configurations.

The BreezeVIEW Template view gives service providers a simple way to set up the configuration profiles for different parameter settings of devices, accelerating deployments/changes and resulting in improved efficiencies and reduced errors.

Powerful fail-safe network configuration with a rollback option

Configuration changes may be applied on groups of devices of different types and versions. Transactions ensure network is always in a consistent state. Rollbacks can be set to any previous transaction.

Telrad Networks is a global provider of innovative LTE telecom solutions, boasting over 280 4G deployments in 100 countries. Telrad stands at the forefront of the technology evolution of next-generation TD-LTE solutions in the sub-6 GHz market. Since 1951, the company has been a recognized pioneer in the telecom industry, facilitating the connectivity needs of millions of end-users through operators, ISPs and enterprises around the world.

For more, please visit telrad.com or email sales@telrad.com.

© Copyright 2015 Telrad Networks Ltd. All rights reserved. Telrad® its logo and all names, product and service names referenced herein are either registered trademarks, trade names or service marks of Telrad Ltd. in certain jurisdictions. All other names are trademarks of their respective owners. Content herein is subject to change without further notice. Any PO's submitted and actual supply of products and/or grant of licenses are subject to Telrad's General Terms and Conditions and/or any other effective agreement between the parties. Roadmap information is provided solely for information purposes, and is not a commitment to deliver any products, features and/or functionalities.

Telrad
We're on your wavelength.